



RL1660

Apposelite

- Aii** 35mm field of view standard; 45mm and 70mm FOV optional.
- Aii** Solves a wide array of imaging problems where low angle of incidence, radial illumination is required.

Ordering Information

Standard Product:
Shipped Next Day

Standard Product Variation:
Shipped Within Two Weeks

RL1660

P/N: RL1660-66035
Configured for use with Ai
Power Supply

Optimal working distance:
12.7mm (.5")
up to 38mm (1.5")

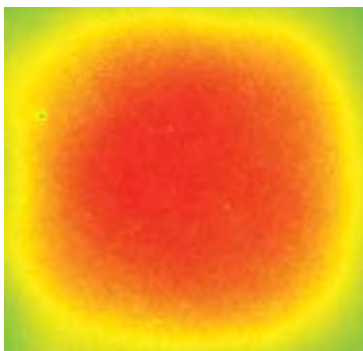
RL1660 -	Spectral wavelength	Field of view (mm)	Optional power Compatibility	Alternative Connector
XXX	XXX	XX	XX	XXX
(UV)	395 [◇]	35	IC	M12*
(blue)	470 [†]	45	IS	
(green)	520 [†]	70	C2	
(yellow)	590		C3	
(orange)	625		C5	
(red)	660		12	
(infra-red)	880		24	
(white)	WHI [†]			

IC = ICS (requires 24v power supply)
IS = ISU (requires 24v power supply)
C2 = Ai Connector
C3 = Pulsar 710 Connector
C5 = Pulsar 320 Connector
* Available with IC, IS, and 24v options only
† Not available in 12v

◇ UV LEDs have a considerably shorter half-life than other LEDs (<1000hrs). For this reason Ai recommends these LEDs be used in strobe mode only. For applications requiring continuous 24v power, contact Ai for assistance.

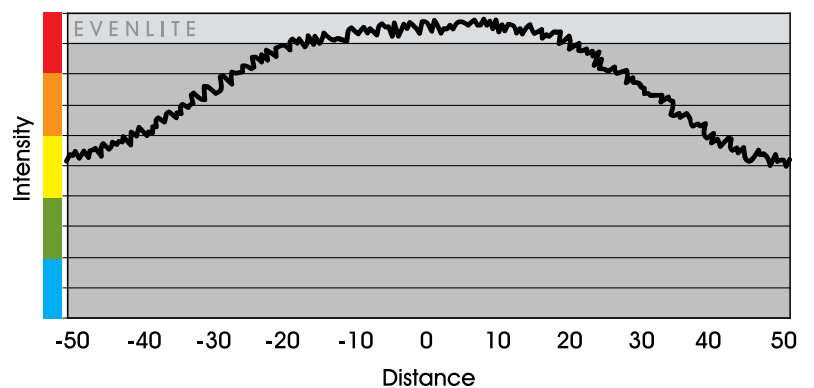
Light Consistency Information

Intensity Distribution



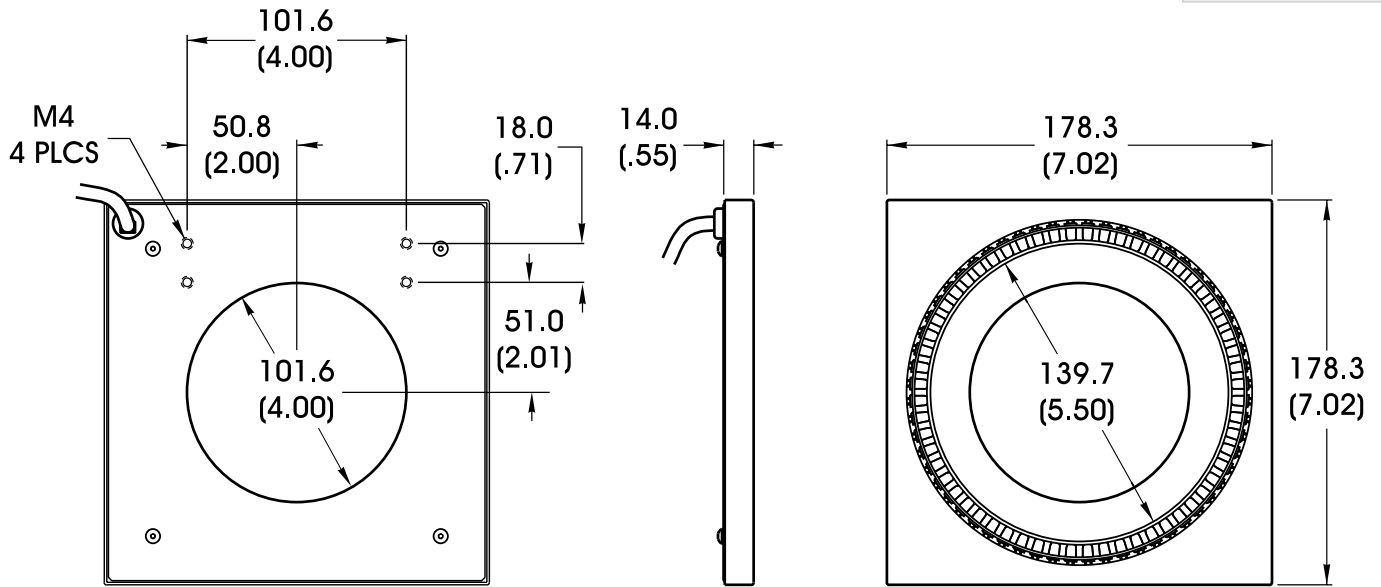
[Taken at 12.7mm (.5")]

Intensity Cross Section



Dimensional Information

[Click for Installation Models & Drawings](#)



DIMENSIONS ARE IN MILLIMETERS (INCHES)

Standard Variation Current Specifications

	blue	green	yellow	orange	red	infra-red	white	RGB	
@12	N/A	N/A	200	200	360	420	N/A	N/A	mA
@24	280	280	120	120	180	240	280	N/A	mA
Ai	240	240	360	360	360	360	240	N/A	

General Specifications

Weight:	681 g (24 oz)
Finish:	Black Anodized
Operating Temperature:	0-60°C
Meets Specifications:	CE, RoHS

Standard Product Information

Red	Max. Illumination	Irradiance (mW/cm ²)	Illuminance (Lux)
	Working Distance: 12.7mm	.87	830
	Lifetime	50,000 hrs	
White	Max. Illumination	Irradiance (mW/cm ²)	Illuminance (Lux)
	Working Distance: 12.7mm	1.15	4,800
	Lifetime	10,000 hrs	

Additional Information