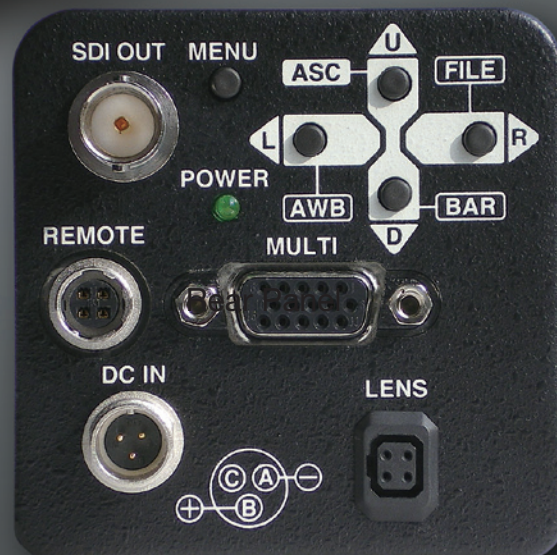


HDTV Digital Camera

HV-HD30



The HV-HD30 HDTV Digital Color Camera from Hitachi incorporates three newly developed HDTV 1/3-inch, 1.3-megapixel CMOS sensors, thereby achieving high picture quality with smearless imaging.

The multiformat output provides each 1080i, 720p, 576i and 480i camera outputs.

The camera head of this high cost performance camera is a compact box type head weighing just 550 grams.

A wide range of adjustments can be made remotely, providing versatility that makes the HV-HD30 usable as a remote observation applications, point of view camera, and in industrial applications such as factory automation, high-end monitoring, and medical applications.

Main Features

Picture Quality

Uses newly developed HDTV 1/3-inch, 1.3-Megapixel CMOS sensors to provide high-quality, smearless images.

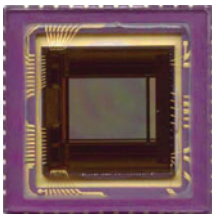
Compact and Lightweight

The HV-HD30 is a compact C-Mount HDTV camera using 1/3-inch imaging devices. The camera itself weighs just 550g (without lens) and is compact enough to be used almost anywhere as a sub-camera or a special applications camera.

Multi-Format Output

By switching the operating mode, the output signal is selectable eight system of SDI video signals.

An RGB/YPbPr analog output (D-sub 15-pin) is also provided.



CMOS Sensor

Low Power Consumption

The use of CMOS sensors and the latest digital signal processing technology has dramatically reduced power consumption compared with past HDTV cameras.

Sophisticated Functions and High Performance

Hitachi professional cameras feature such diverse digital signal processing technology as gamma, knee, masking, and DTL, these being accessible by up/down switches on the rear panel of the camera head, thereby providing high functionality and performance.

Remote Control

Various adjustments can be made remotely, either from an optional compact remote control unit, or from a personal computer.



RC-Z3 Remote Control Unit

Main Specifications

Scan Format	HDTV 1080i 59.94/50, 720p 59.94/50 SDTV 576i /50 (16:9/4:3), 480i 59.94 (16:9/4:3)
Imaging Device	1/3 inch 1.3 million pixels CMOS
Total Pixels	1312 (Horizontal) x 1032 (Vertical)
Effective Pixels	1280 (Horizontal) x 720 (Vertical)
Optical system	1/2 inch, F1.6 prism
Synchronization	Internal / External
Lens Mount	C mount (Flange back: 17.526 mm in air)
Horizontal Resolution	720 TV Line (HD-SDI)
Sensitivity	2000 lx / F5.6
S/N	50 dB Typ (HD-SDI output decode, Y-channel, bandwidth: 30MHz)
High gain	0 to +12 dB, 1 dB step
Shutter	1/100, 1/125, 1/250, 1/500, 1/1000, 1/2000, 1/4000 sec
Lock Scan	1/60 to 1/5600 (at 59.94 Hz) 1/59.94 to 1/4600 (at 50.00 Hz)
SDI Output	1 system: SMPTE292M 1.5Gbps 1 system: SMPTE259M 270Mbps
Analog Output	1system (D-sub15pin) : Component (Switchable RGB, YPbPr) Y, G 1.0 Vp-p/75 Ω Pb, Pr, R, B 0.7 Vp-p/75 Ω
Power Supply	12 V DC (10.5 V to 15 V)
Power Consumption	Approx. 8 W
Dimensions	65(W) x 65(H) x 125(D) mm
Mass	Approx. 550g (Except lens)
Operation Temperature	-10 to +40 °C
Connector	HD-SDI / SD-SDI output (BNC, 75Ω)x1, D-sub15 pin (Analog output, external sync*) x1 Lens control, Serial control DC power supply input

*External sync input is synchronize with only the signal format accorded to camera setting mode.

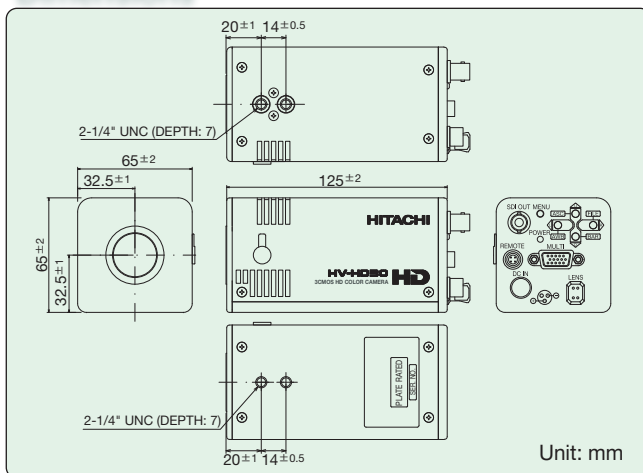
D-sub15pin Connector Arrangement

Pin No.	I/O signal	Pin No.	I/O signal
1	R/R-Y OUT	9	UNREG +12V IN
2	G/Y OUT	10	-
3	B/B-Y OUT	11	GND
4	-	12	RXD
5	GND	13	HD IN/HD OUT/SYNC OUT
6	VIDEO GND	14	VD IN/GL IN/VD OUT
7	VIDEO GND	15	TXD
8	VIDEO GND		

Accessories

AC Adaptor	IA-60a (I. D. X.)
Remote Control Unit	RC-Z3
Lens	C Mount, 3CCD, 1/2 inch lens

Dimensions



Unit: mm

CAUTION: To ensure safe operation, please read the instruction manual before using this product.

Hitachi Kokusai Electric Inc.

Head Office : 14-1, Sotokanda 4-choume, Chiyoda-ku, Tokyo 101-8980, Japan
Phone : +81(0) 3-6734-9432, Fax : +81(0) 3-5209-5942
URL : <http://www.hitachikokusai.co.jp>

Hitachi Kokusai Electric (Shanghai) Co., Ltd. Beijing Branch
Room 1413, Beijing Fortune Building, 5 Dong San Huan Bei-Lu, Chao Yang District, Beijing
Phone : +86(0) 10-6590-8755, Fax : +86(0) 10-6590-8757

Hitachi Kokusai Electric America, Ltd. URL : <http://hitachikokusai.us>

Headquarters and Northeast Office West Office : 150 Crossways Park Drive, Woodbury, New York 11797, U. S. A.
Phone : (+1) 516-921-7200, Fax : (+1) 516-496-3718

Midwest Sales : 371 Van Ness Way, Suite 120 Torrance, CA, 90501, U. S. A.
Phone : (+1) 310-328-6116, Fax : (+1) 310-328-6252

South Sales : Phone : (+1) 330-334-4115, Fax : (+1) 516-496-3718
Parts Center : Service (+1) 989-345-5379
Latin Sales : Service (+1) 256-774-3777

Hitachi Kokusai Electric Canada, Ltd. URL : www.hitachikokusai.ca

Head Office : 1 Select Avenue Unit#12 Scarborough, Ontario M1V 5J3, Canada
Phone : (+1) 416-299-5900, Fax : (+1) 416-299-0450
Eastern Office : 5795 Chemin St. Francois St. Laurent, Quebec H4S 1B6, Canada
Phone : (+1) 514-332-6687, Fax : (+1) 514-335-1664

Hitachi Kokusai Electric Europe GmbH

Head Office : Weiskircher Straße 88, Jügesheim D-63110 Rodgau, Germany
Phone : +49(0) 6106-69920, Fax : +49(0) 6106-16906
URL : www.hitachi-ke-eu.com
General email address : info@hitachi-ke-eu.com

Hitachi Kokusai Electric U.K. Ltd.

Head Office : Windsor House, Britannia Road, Waltham Cross, Hertfordshire EN8 7NX, United Kingdom
Phone : +44(0) 845-121-2177, Fax : +44(0) 845-121-2180
General email address : uksales@hitachi-ke-eu.com



CERTIFICATE No.
JMI-0062
ISO 9001/BS 5750Pt1
EN 29001/JIS Z9901