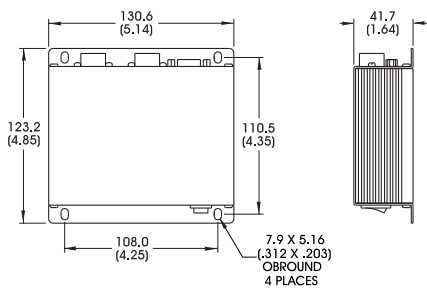
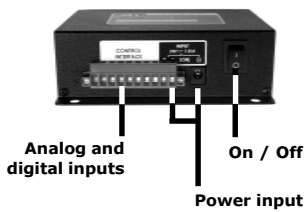




CS410



DIMENSIONS ARE IN MILLIMETERS (INCHES)



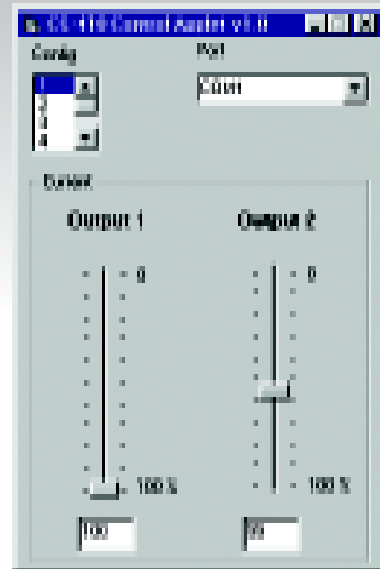
CS410

Dual Output Intensity Controller

- Provides independent intensity control for two light outputs.
- RS-232 programmable.
- Front panel terminal block provides an analog and a digital (on/off) control input for each light output.
- Signature Technology (Signatech) verifies a light head's electronic signature and automatically sets the appropriate output current level.
- Features industrialized power input terminal block as well as conventional DC jack.
- Extruded enclosure provides optimal thermal management.
- Can be used with either PS24 or PS24-TL power supplies.

CS410 Control Applet

The CS410 Control Applet enables the user to program the intensity levels of up to two lights connected to a CS410 dual output intensity controller. Intensity is expressed as a percentage between 0 and 100 percent, where 0 percent represents minimum intensity and 100 percent maximum intensity. Maximum intensity is calculated based on the SignaTech signature of the light and various controller operating parameters.



Part Number Designation

Standard Product **SHIPPED NEXT DAY**

Part Number: **CS410**